

RAPID TESTING

Ever wonder how to maximize your time and reduce cost without losing the quality of the stain?

We have developed a comprehensive list of histology products to help shorten protocol time without sacrificing expected results.

SigmaAldrich.com/special-stains



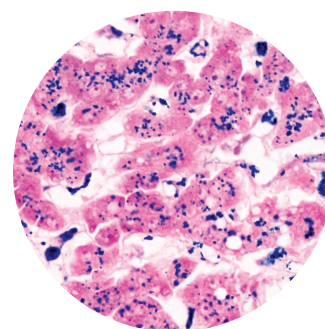
See reverse for product information.

The life science business of Merck KGaA, Darmstadt, Germany operates as MilliporeSigma in the U.S. and Canada.

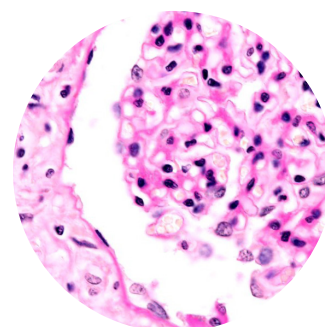
Sigma-Aldrich®
Lab & Production Materials

Histology Special Stains

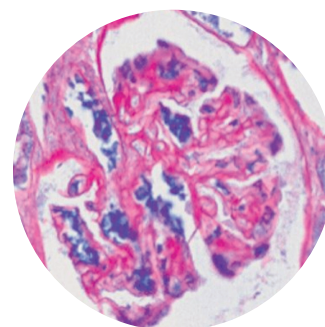
Product Name	Cat. No.
Amyloid stain, Congo Red kit	HT60
Biebrich scarlet-acid fuchsin solution (250 mL)	HT151
Elastic stain kit	HT25A
Fontana-Masson stain kit	HT200
Gram stain for tissue	HT90T
Iron stain kit	HT20
Harleco® Hemacolor® Stain Kit	65044
Mucicarmine stock solution (250 mL)	HT3018
Mucicarmine stock solution (500 mL)	HT30116
Periodic acid-Schiff (PAS) kit	395B
Schiff's reagent Intense	102572
Silver stain kit, modified Steiner-Steiner	HT101A
Silver stain (modified GMS) kit	HT100A
Trichrome stain AB solution	HT10516
Trichrome stain LG solution	HT10316
Trichrome stain (Masson) kit	HT15
Acid Fast Stain	
Carbol-fuchsin solution (250mL)	HT8018
Malachite green solution (250 mL)	HT8028
Carbol-fuchsin solution (500 mL)	HT80116
Malachite green solution (500 mL)	HT80216



Iron stain,
HT20



Periodic acid-Schiff (PAS),
395B



Trichrome stain (Masson),
HT15

[SigmaAldrich.com/special-stains](https://www.SigmaAldrich.com/special-stains)

Fontana-Masson Stain Kit, HT200 30X Faster!

Reduce time with the *new* microwave procedure
Melanin = 1 minute incubation time
Argentaffin = 2 minute incubation time

[SigmaAldrich.com/fontana-masson](https://www.SigmaAldrich.com/fontana-masson)

Iron Stain Kit, HT20

Maximize time and savings! 5 minute protocol using
the established microwave procedure

[SigmaAldrich.com/iron-stain-kit](https://www.SigmaAldrich.com/iron-stain-kit)

To place an order or receive technical assistance in the U.S. and Canada, call toll-free 1-800-645-5476
For other countries across Europe and the world, please visit: [SigmaAldrich.com/offices](https://www.SigmaAldrich.com/offices)
For Technical Service, please visit: [SigmaAldrich.com/techservice](https://www.SigmaAldrich.com/techservice)

MilliporeSigma
400 Summit Drive
Burlington, MA 01803

[SigmaAldrich.com](https://www.SigmaAldrich.com)

© 2020 Merck KGaA, Darmstadt, Germany and/or its affiliates. All Rights Reserved. MilliporeSigma and the vibrant M are trademarks of Merck KGaA, Darmstadt, Germany or its affiliates. All other trademarks are the property of their respective owners. Detailed information on trademarks is available via publicly accessible resources.

