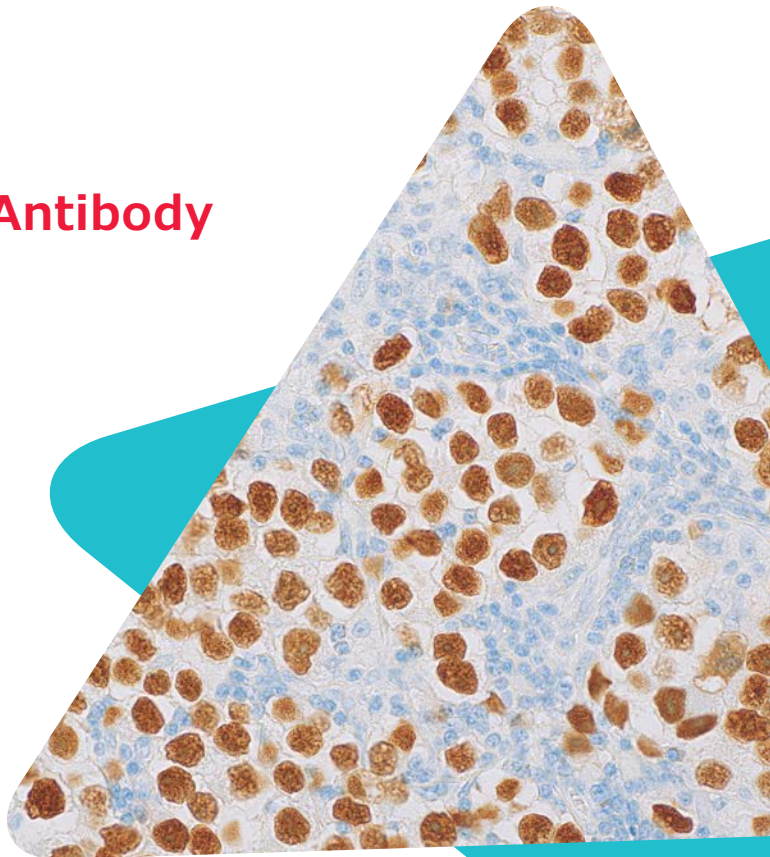


Cell Marque™ Tissue Diagnostics

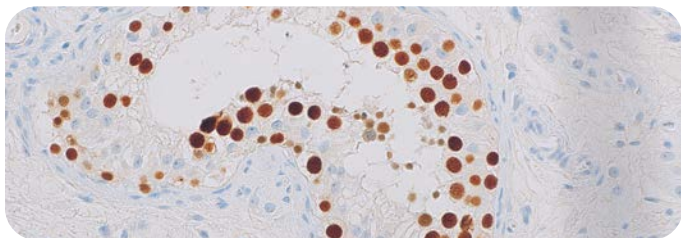
MAGEC2 (EP405)

Rabbit Monoclonal Primary Antibody

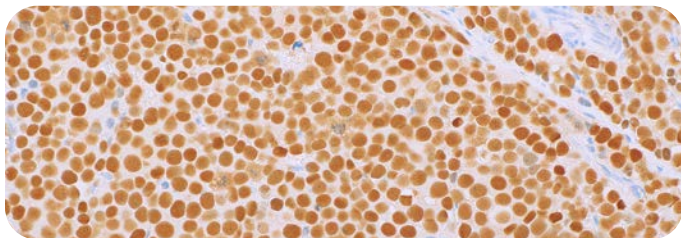
Melanoma-associated antigen C2 (MAGEC2), encoded by the testis cancer gene CT10, belongs to a family of proteins that bind E3 RING ubiquitin ligases via a common MAGE homology domain.¹⁻³ The MAGE-RING complexes that are formed enhance the activity of the ubiquitin ligase binding partners. *In vitro* studies suggest that MAGEC2, which binds to TRIM28, is involved in tumorigenesis through the increased degradation of p53.⁴ In germ cell tumors, aberrant expression of MAGEC2 is exhibited in seminomas, but is absent in yolk sac tumor and embryonal carcinoma.⁵⁻⁷



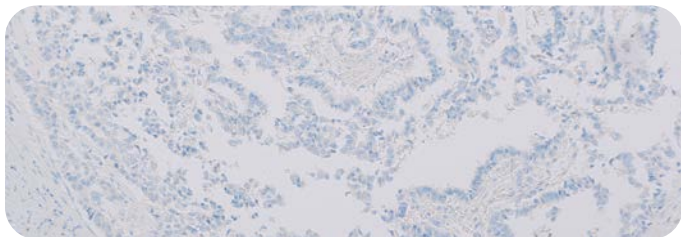
Seminoma



Germ Cell Neoplasia *in situ*



Seminoma



Yolk Sac Tumor

Ordering Information

Description	Cat No.
0.1 mL concentrate	477R-14
0.5 mL concentrate	477R-15
1.0 mL concentrate	477R-16
1.0 mL predilute	477R-17
7.0 mL predilute	477R-18



Intended Use:

MAGEC2 (EP405) Rabbit Monoclonal Primary Antibody is intended for laboratory use in the detection of the MAGEC2 protein in formalin-fixed, paraffin-embedded tissue stained in qualitative immunohistochemistry (IHC) testing. This product is not a stand-alone diagnostic, and cannot be used for diagnosis, treatment, prevention, or mitigation of disease.

Product Information:

Visualization: Nuclear

Controls: Seminoma

Dilution Range: 1:25–1:50

Associated Specialty: Genitourinary (GU) Pathology

References:

1. Güre AO, et al. CT10: a new cancer-testis (CT) antigen homologous to CT7 and the MAGE family, identified by representational-difference analysis. *Int J Cancer*. 2000;85(5):726-32.
2. Lee AK, et al. A comprehensive guide to the MAGE family of Ubiquitin Ligases. *J Mol Bio*. 2017;429(8):1114-1142.
3. Doyle JM, et al. MAGE-RING Protein Complexes Comprise a Family of E3 Ubiquitin Ligases. *Mol Cell*. 2010;39(6):963-974.
4. Zhuang R, et al. Generation of monoclonal antibodies to cancer/testis (CT) antigen CT10/MAGE-C2. *Cancer Immun*. 2006;6:7.
5. Bode PK, et al. MAGEC2 is a sensitive and novel marker for seminoma: a tissue microarray analysis of 325 testicular germ cell tumors. *Mod Path*. 2011;24:829-835.
6. Chen YT, et al. Chromosome X-encoded cancer/testis antigens show distinctive expression patterns in developing gonads and in testicular seminoma. *Hum Reprod*. 2011;26(12):3232-43.
7. Weissferdt A, et al. Primary mediastinal seminomas: a comprehensive immunohistochemical study with a focus on novel markers. *Hum Pathol*. 2015;46(3):376-83.

USA

Toll Free: 800.665.7284
Phone: 916.746.8900
Fax: 916.746.8989
Email: service@cellmarque.com
www.cellmarque.com

CANADA

Phone: +1 916.746.8900
Fax: +1 916.746.8989
Email: international@cellmarque.com
www.cellmarque.com

MilliporeSigma
400 Summit Drive
Burlington, MA 01803



© 2020 Merck KGaA, Darmstadt, Germany and/or its affiliates. All Rights Reserved. MilliporeSigma, the vibrant M, Sigma-Aldrich and Cell Marque are trademarks of Merck KGaA, Darmstadt, Germany or its affiliates. All other trademarks are the property of their respective owners. Detailed information on trademarks is available via publicly accessible resources.

