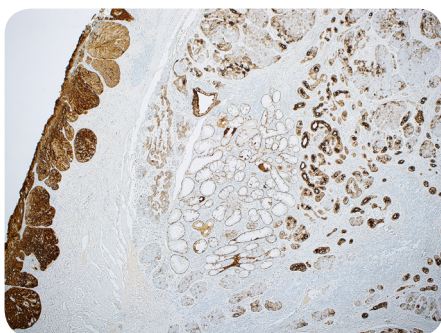


Cell Marque™ Tissue Diagnostics

New Rabbit Monoclonal Antibodies

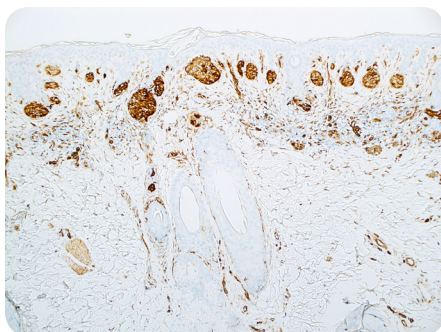


Cytokeratin 5 & 6 (EP24 & EP67)

Twenty identified cytokeratins make up a complex family of intermediate filaments.¹ Cytokeratin 5 (58kDa) & cytokeratin 6 (56kDa) are type II high molecular weight keratins that are expressed in a broad range of normal tissues including breast, prostate, mesothelium, skin and esophagus.¹⁻³ Anti-Cytokeratin 5 & 6 is a useful immunohistochemical marker in the identification of mesothelioma and lung squamous cell carcinoma.¹

References: 1. Ordóñez NG. *Am J Surg Pathol.* 1998; 22:1215-21. 2. Takahashi K, et al. *J Biol Chem.* 1995; 270:18581-92. 3. Lersch R, et al. *Mol Cell Biol.* 1989; 9:3685-97.

Description	Cat. No.
0.1 mL concentrate	356R-14
0.5 mL concentrate	356R-15
1.0 mL concentrate	356R-16
1.0 mL predilute	356R-17
7.0 mL predilute	356R-18



Nestin (EP287)

Nestin is a class VI intermediate filament (IF) protein. Nestin is expressed in neural progenitor cells during development of the central nervous system and peripheral nervous system. Cytoplasmic anti-nestin staining mostly occurs under pathological conditions. It has been reported that nestin expression is significantly increased in melanoma and correlated with more advanced stages of the disease.¹ Nestin immunoreactivity is also reported in melanoma cells of HMB-45-negative amelanotic and melanotic, non-desmoplastic melanoma.² Nestin is also useful in subclassifying breast carcinoma.³ Only cytoplasmic staining is considered positive, whereas any nuclear staining is considered as background artifact.

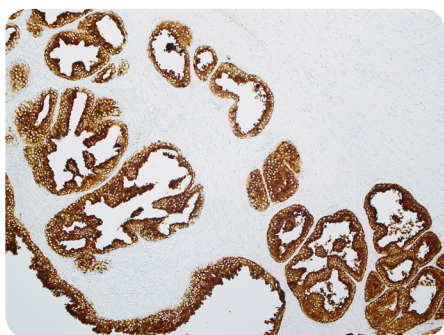
References: 1. Brychtova S, et al. *J Cutan Pathol.* 2007; 34:370-5. 2. Kanoh M, et al. *J Dermatol.* 2010; 37:505-11. 3. Li H, et al. *Cancer Res.* 2007; 67:501-10.

Description	Cat. No.
0.1 mL concentrate	388R-14
0.5 mL concentrate	388R-15
1.0 mL concentrate	388R-16
1.0 mL predilute	388R-17
7.0 mL predilute	388R-18



Cell Marque™ Tissue Diagnostics, in a proud partnership with Abcam, exclusively offers a robust portfolio of highly specific and sensitive rabbit monoclonal antibodies created with their patented RabMAB® technology.



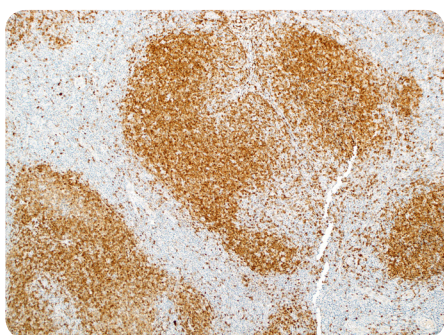


PSA (EP109)

PSA is a 33 kDa protein primarily produced by the prostatic epithelium and the epithelial lining of the periurethral glands.¹ PSA is strongly expressed in both normal and neoplastic prostatic tissue. Anti-PSA is most useful in determining the prostatic origin of carcinomas in non-prostate tissues (metastatic disease) using IHC techniques.¹⁻⁴

References: 1. Polascik TJ, et al. *J Urol.* 1999; 162:293-306. 2. Stenman UH, et al. *Semin Cancer Biol.* 1999; 9:83-93. 3. Alanen KA, et al. *Pathol Res Pract.* 1996; 192:233-7. 4. Varma M, et al. *Histopathology.* 2005; 47:1-16.

Description	Cat. No.
0.1 mL concentrate	324R-14
0.5 mL concentrate	324R-15
1.0 mL concentrate	324R-16
1.0 mL predilute	324R-17
7.0 mL predilute	324R-18



TCL1 (EP105)

TCL1 is a 14 kDa product of the TCL1 gene. TCL1 protein is normally found in the nucleus and cytoplasm of lymphoid lineage cells during early embryogenesis. Chromosomal translocations may lead to overexpression of TCL1, resulting in T-cell leukemia and B-cell lymphoma.¹⁻³ TCL1 binds to a novel site in the pleckstrin homology (PH) domain, resulting in activation and nuclear translocation of Akt by overexpressed TCL1 which may promote an anti-apoptotic response; this may normally serve to promote growth during development but may lead to malignancy when TCL1 is overexpressed.⁴ TCL1 is expressed in differentiated B-cells under both reactive and neoplastic conditions, antigen committed B-cells, and in germinal center B-cells. TCL1 is down-regulated in the latest stage of B-cell differentiation.^{5,6} TCL1 is overexpressed in Burkitt lymphoma, chronic lymphocytic leukemia, mantle cell lymphoma, and follicular lymphoma.^{2,7,8}

References: 1. Takizawa J, et al. *Jpn J Cancer Res.* 1998; 89:712-8. 2. Bichi R, et al. *Proc Natl Acad Sci USA.* 2002; 99:6955-60. 3. Herling M, et al. *Leukemia.* 2006; 20:280-5. 4. Roos J, et al. *Pathobiology.* 2001; 69:59-66. 5. Pekarsky Y, et al. *Oncogene.* 2001; 20:5638-43. 6. Pekarsky Y, et al. *Hematol Oncol Clin North Am.* 2004; 18:863-79. 7. Rodig SJ, et al. *Am J Surg Pathol.* 2008; 32:113-22. 8. Nakayama I, et al. *Pathol Int.* 2000; 50:191-9.

Description	Cat. No.
0.1 mL concentrate	357R-14
0.5 mL concentrate	357R-15
1.0 mL concentrate	357R-16
1.0 mL predilute	357R-17
7.0 mL predilute	357R-18

To learn more, visit
www.cellmarque.com

To place an order or for technical assistance, contact us directly:

Toll Free: 800.665.7284
 Phone: 916.746.8900
 Fax: 916.746.8989
 Email: service@cellmarque.com
www.cellmarque.com

MilliporeSigma
 400 Summit Drive
 Burlington, MA 01803

SigmaAldrich.com

